



Pastoral Care

Pastoral Care Workers help residents with their spiritual life. They help them feel hope and deal with the challenges of growing older.



Are you a person who:

- Is spiritual?
- Can help others in their greatest time of need?
- Has the ability to comfort others?



What is the salary?

\$46,000 – \$61,000

Employment outlook



Average Growth



How can you prepare to become a Pastoral Care Worker?

- Become involved in a church of your choosing.
- Study how religions are similar and different.
- Read stories about overcoming hard times.



How much schooling is needed?

Master's Degree



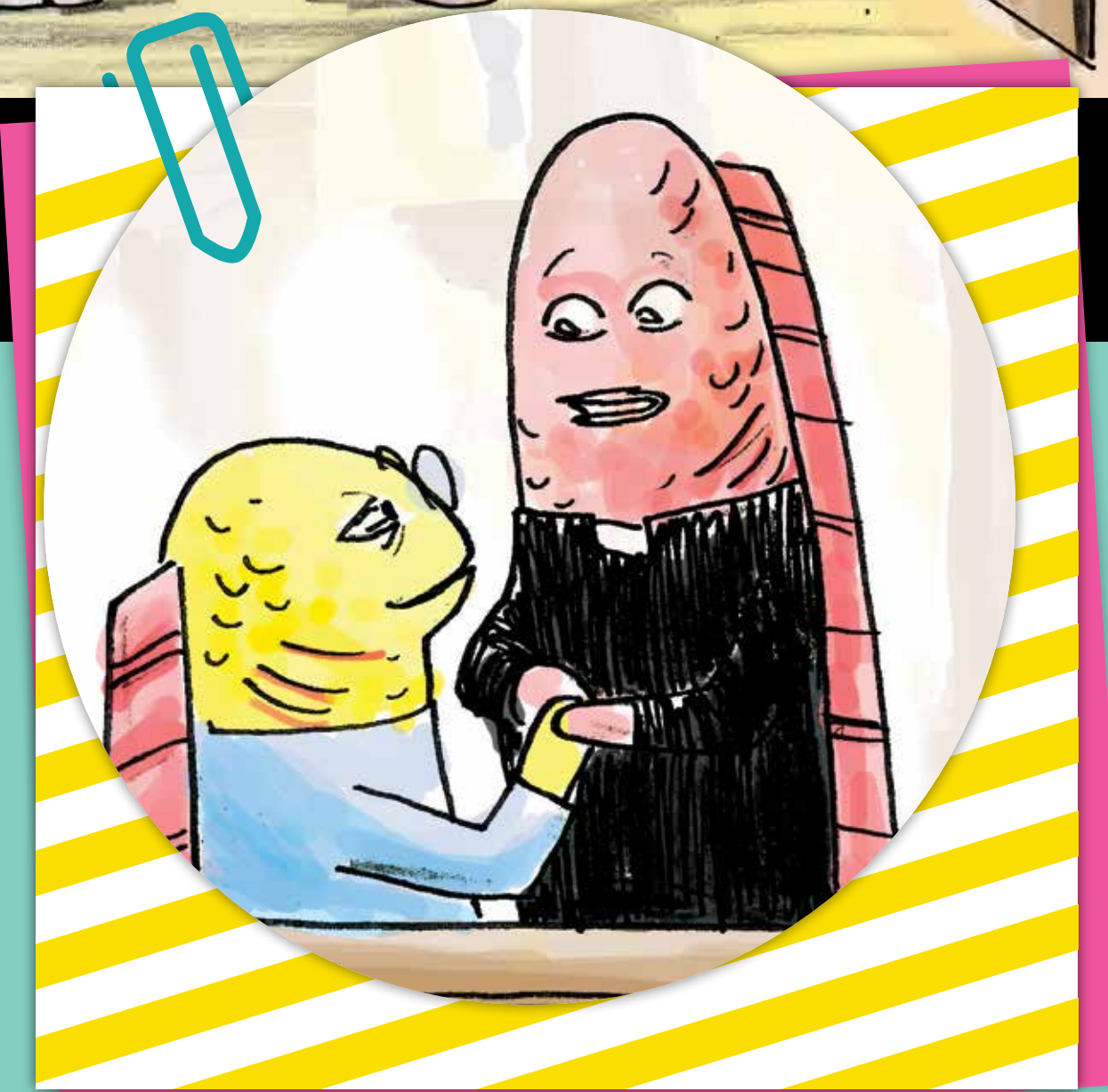
What are similar careers?

- Counseling
- Marriage Therapist
- Motivational Speaker



Career steps

- Chaplain
- Bereavement Counselor
- Associate Chaplain



“I love being the person others rely on during difficult times. I honestly don't feel as if I've ever worked a day in my life.”